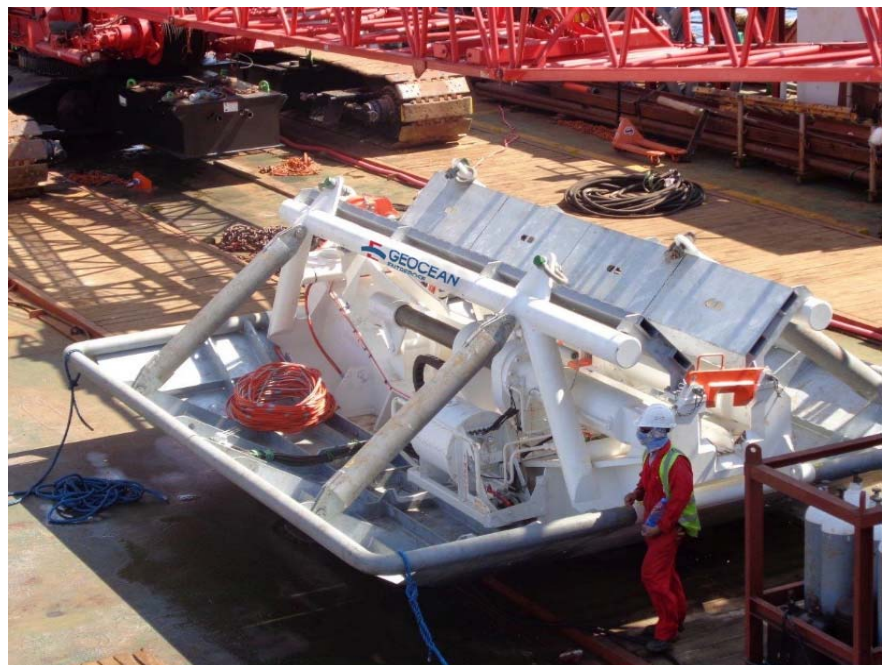
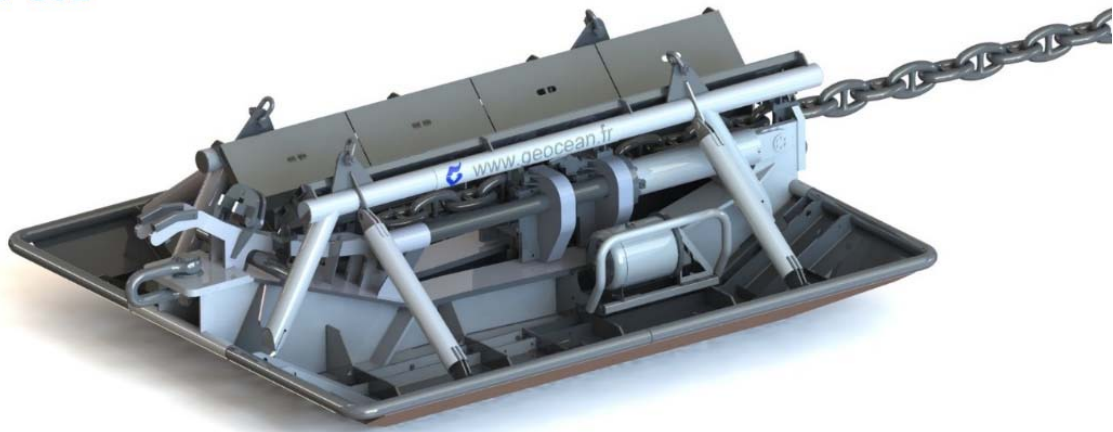


FULLY REMOTE OPERATED
(Up to 100m Water Depth)

- Cross tensioning of drag anchors for CBM & SPM installation
- Diverless remotely operated from support vessel/barge
- Reduced weather downtimes
- Chain Diameters from 3" to 6"





PRINCIPAL DIMENSIONS

LENGTH	7.2m
WIDTH	5.6m
TRANSPORTATION HEIGHT	2.3m
WEIGHT	23MT

SPECIFICATIONS

TENSIONING CAPACITY	Up to 400 MT
OPERATING WATER DEPTH	100m (can be upgraded to deeper water)
CHAIN DIAMETER	From 3" to 6", adjustable according to project specifications
OPERATIONS	Remotely operated from the deck of support vessel Fully autonomous during tensioning operations

POWER SUPPLY

HYDRAULIC	75kW from HPU on deck
-----------	-----------------------

CONTROL SYSTEM

CONTROL ROOM	10' container on shore or on a support vessel
CONTROL SYSTEM	Video monitoring system (4 fixed subsea cameras) Tension monitoring system

TRANSPORT

CONTAINER	1 x 40' Open Top
-----------	------------------

CERTIFICATIONS

EC RULES	All lubricants are biologically certified and biodegradable.
----------	--

Geocean

Quartier du Brégadan - ZA Technoparc - CS 60001 - 13711 Cassis Cedex - France

Tel: +33 (0) 442 18 02 18 - Fax: +33 (0) 442 18 02 20 - info@geocean.com - www.geocean.com